

TAURAROA AREA SCHOOL PROSPECTUS



www.tauraroa.school.nz



Vision: To be the best we can be

SENIOR MANAGEMENT TEAM

Principal	Grant BURNS
Deputy Principal (Yrs 0-6)	Andy MOUAT
Deputy Principal (Yrs 7-10)	Peter WALTON-JONES
Deputy Principal (Yrs 11-13)	Sue HOWES

DEANS

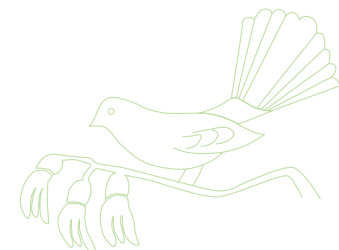
Yr 1 - 3	Ruth PHILLIPS - HOD Learning Support
Yr 4 - 6	Jo SEARLE
Yr 7 - 8	Ann-Marie ANDERSON
Yr 9	Chris JENKINS
Yr 10	Derek HOPPER - HOD Music
Yr 11	Ray PETRIE - HOD PE & Health
Yr 12 - 13	Allison MCKELLAR

TEACHING STAFF

Paula ASHCROFT - Year 7 Teacher
 Keith CAVE - Technology, Specialist Classroom Teacher
 Bruce COLE - Statistics, Calculus, Physics
 Judy DORSET - New Entrants Teacher
 Justin DOWNES - Art
 Sandra GUEST - HOD Technology
 Mary HACKETT - Learning Support Unit
 Jeremy HILL - HOD Mathematics, Economics
 Rachel HILL - HOD Science
 Tabitha KAISER - TIC Drama, English
 Adrienne KYD - Graphics, Technology
 Don McDONALD-SPICE - HOD Languages, Maori, Year 7 Teacher
 Maree MIDDLEMASS - Year 5/6 teacher

SUPPORT STAFF

Executive Officer	Debby KEAY
Principal's Secretary/	Janine BURNS
International Student Manager	
Office Administration	Elaine PIENAAR
Administration Support	Avril CHILD
Caretaker	Greg WALKER
Computer/AV Technician	Rob SMITH
Gateway Coordinator	Sheree SAUNT
Library Assistant	Delwyn MORRIS
Sports Coordinator	Julie TARR
Arts Coordinator	Fiona SNEDDON
Teacher Aides	Julie GRINDLE, Fiona SNEDDON, Maria WHITAKER, Diane KAISER Margaret LEADER



BOARD OF TRUSTEES

Chairperson - Susan SKELTON
 Deputy Chairperson - Ringi SMITH
 Staff Representative - Rachel HILL
 Other members - Alan WILSON, Shelly PRISK, Chris BUDGEN, Dawn DUTTON, Mat ALFORD

Nigel MILLS - French, Social Studies, Mathematics
 Janine MOORE - Year 4
 Jodie NICHOL - HOD Sport, Health, PE
 Ross OSBORNE - Guidance Counsellor
 Victoria RUDMAN - English, Social Studies
 Maria QUIN - Library, English
 Helen TOR - HOD English
 Christopher TOWNSHEND - Science, P.E, Chemistry
 Alister WILLIAMS - English, Year 8 Teacher
 Natalie HYDES - Science, Maths, Health
 Vanessa LAWGUN - Social Studies, Health
 Carlos LEGAZ - Mathematics, Science
 Sarah MORRIS - PE/Health
 Clarissa TANA - Reading, Maths

FROM THE PRINCIPAL

Kia Ora! Welcome to Tauraroa Area School.

Every student at our school enjoys a friendly, safe, caring, learning-focused environment. The size of our school (480 students) is small enough to allow flexibility to meet the needs of every student, yet large enough to allow us to provide outstanding opportunities and resources.

Catering for all Primary and Secondary year levels (Years 1-13), the school is able to foster close links with families and provide students with a seamless education, avoiding the disruptions experienced by most NZ students at Years 7 and 9.

Our excellent academic results consistently show Tauraroa AS is meeting the learning needs of students. Just as important, however, is our commitment to equipping our students to become well-rounded, confident and contributing citizens, who are prepared to meet the complex challenges of 21st Century living. Our Cornerstone Values programme plays an important role in this regard.

We offer a modern and well-equipped campus, located in a beautiful rural setting, in Whangarei District. An extensive (and ongoing) building programme in recent years has provided our students and teachers with outstanding facilities.

I look forward to having you joining the Tauraroa family!

Grant Burns
Principal

CONTACT

PHONE - (09) 432 2643
 FAX - (09) 432 2436

POSTAL ADDRESS

Box 36, Maungakaramea,
Northland 0146

WEB SITE

www.tauraroa.school.nz

EMAIL

principal@tauraroa.school.nz

PHYSICAL ADDRESS

Cnr Omana and Tauraroa Roads
Tauraroa
Northland



The school was founded in 1958 as a District High School, becoming Tauraroa Area School in 1976. We are proud to continue the tradition of providing a high quality education in a caring and supportive environment for students from Year 0 – Year 13.

Tauraroa Area School is sited in a rural setting, 22km from Whangarei, and 4km from the township of Maungakaramaea. Facilities include a gymnasium, heated swimming pool, technology areas, two computer rooms, 'Astroturf' courts, specialist classrooms and community library.

Skilled and dedicated staff ensures that every student is valued and cared for. Students are encouraged to reach their potential in all fields of endeavour – academic, sporting and cultural. In all activities, students build a sense of self worth through achievement. As an Area School, we provide a unique environment for students' growth and development, providing continuous learning pathways encompassing primary, intermediate and secondary levels.

An outstanding report from the Education Review Office (October 2013) highlighted the positive and caring learning culture of the school. NCEA success rates are among the highest in the country, providing lifelong

opportunities for our students.

Tauraroa Area School strives to meet the changing needs of our times by providing continuous professional development for staff and top quality buildings and equipment.

The school and community offer a wide range of sporting activities, including clay bird shooting, squash, netball, rugby, football, swimming, martial arts and hockey. Students are encouraged to become involved. Events such as swimming sports, athletic sports, top house and cross country feature in the school calendar. All students are required to participate for their house in these events. Students are encouraged to participate in the annual Northland Area School sports tournament and sports exchanges with other schools. Many other activities take place including camps, field trips, music groups, speechmaking, debating, Kapahaka, Mathex, drama and environment club.

Specialist music tuition is offered in piano, guitar, woodwind, brass and drums. A range of performance opportunities and groups exist for students.

The annual Country Day still thrives in our rural community, giving students the opportunity to raise and show calves, lambs and kids. The wealth of activity offered to our students - grounded in the principles of Cornerstone Values, ensures that when students graduate they leave as well rounded, caring individuals who are ready to make a significant contribution to society.

CORNERSTONE VALUES

Tauraroa Area School has adopted the Cornerstone Values approach to learning and teaching. One value is highlighted every term and is reinforced in every subject at all year levels. Parents are encouraged to highlight the current term's value through practices in the home.

The eight values have been found by researchers to be common to many religions and cultures over a long period of time. As a school, we believe that by clearly articulating, teaching and actively demonstrating the Cornerstone Values, our students will be equipped to deal with the complexities and uncertainties of life beyond school.

The eight Cornerstone Values are:

RESPONSIBILITY, KINDNESS, RESPECT, DUTY, HONESTY, CONSIDERATION FOR OTHERS, COMPASSION AND OBEDIENCE.



YEARS 0 TO 8

Through engagement in the eight learning areas of the New Zealand Curriculum, our students encounter the essential principles, values and key competencies to support success in their senior schooling years and life beyond the classroom. The core programme is delivered by home room teacher(s), with specialist teaching in areas such as PE, Technology, Te Reo and The Arts where timetabling allows. Where possible, units of work are integrated into multi-disciplinary studies. All pupils from Year 0 onwards have experience with computing devices. An independent learning approach to classroom work encourages high levels of accountability, motivation and self-management in our students. A Reading Recovery programme operates for the pupils who, after their first year at school, have shown that they have not made the progress expected in all aspects of their reading. The number of students entering this programme is dependent on Ministry funding.

In Years 7 and 8, students are based in a homeroom for core subjects and receive specialist teaching in French, Maori, Music, Art, Drama, Digital Technology, Physical Education, Science. Technology classes in Workshop, Food, Computing and Horticulture ('Bio-Tech') are also offered.

YEARS 9 & 10

All pupils study English, Science, Mathematics, Social Studies, Health and Physical Education. The remaining curriculum areas will be covered by a multi course structure of part year modules.

YEAR 11

Students take six subjects to present for the National Certificate in Educational Achievement (NCEA) Level 1.

Courses in English, Mathematics and Science are compulsory with three further subjects chosen from: Economics, Geography, Health,

Graphics (with CAD), Hospitality, Information Management, Physical Education, Materials Technology, Music, Textiles, Drama and Visual Art. The list of available subjects may change, depending on student demand.

YEAR 12

Students take six subjects to present for NCEA Level 2. English and Mathematics are compulsory. Four further subjects are chosen from: Agricultural Studies, Biology, Chemistry, Computing, Economics, Geography, Graphics, Health, Hospitality, Materials Technology, Physical Education, Physics, Music and Visual Art. This list is not, however, exclusive. Students will be able to make up a course from Level 1 and 2 subjects, after consulting with the Deputy Principal, Mrs Howes.

YEAR 13

The following subjects are offered at Year 13: Biology, Calculus, Chemistry, Economics, English, Geography, Graphics (with CAD), Health, Physics, Physical Education and Statistics with Modelling. These allow sufficient NCEA level 3 credits for university entrance. We can also provide subjects and qualifications to meet the needs of students not going on to university by linking some students with Year 12 classes. Credits are thus available at NCEA Levels 2 and 3. Work placement opportunities are available.

We are happy to tailor courses to suit individual student's needs and interests. Please just ask!

GATEWAY

Year 11-13 students may gain work experience with placements in occupations of their choice. Students may undertake work in a wide range of careers, trades and professions, gaining NCEA Credits. The aim of this programme is to provide students with workplace experience, industry insight and skills which will help them to make a more informed career pathway decision in the future.

STAR (Secondary-Tertiary Alignment Resource)

STAR funding allows senior students to complete short courses of study to gain NCEA Credits in a wide range of areas, as diverse as First Aid, Defensive Driving, barista skills and child care. These courses are provided by educators such as private training organisations and North Tec.

TRADES ACADEMY:

VOCATIONAL PRIMARY INDUSTRIES (VPI)

A rural skills based course for Year 12 students provides opportunities to gain Level 2 and Level 3 NCEA. Students undertake practical farm skills with Taratahi Farms and other providers, in addition to career planning and creating their curriculum vitae. Students also learn how to budget and cook in preparation for their adult life.

HOSPITALITY

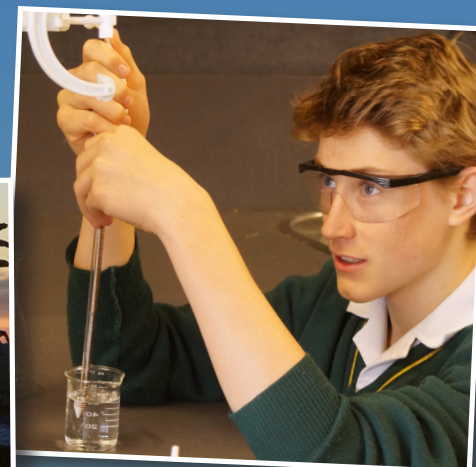
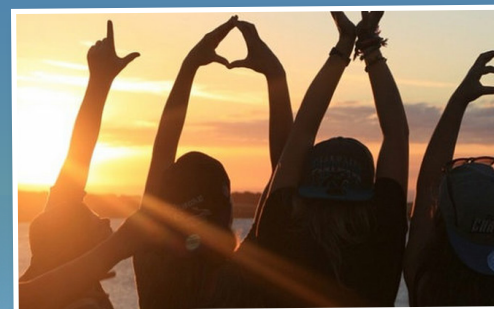
In conjunction with NorthTec and the Te Tai Tokerau Trades Academy, a Level 3 Hospitality course is offered to Year 13 students. Attendance at NorthTec for one day a week is included in students' programmes.

EXTRA AND CO-CURRICULAR ACTIVITIES

A range of opportunities allows Tauraroa Area School Students to achieve success beyond the classroom.

These include:

- Winter and summer sports
- Overseas study trips (recently to Japan, France and the Cook Islands)
- Duke of Edinburgh Hillary Award
- School productions
- Music groups - Concert Band, Jazz Band, Choir, Rock Bands
- School camps
- Debating
- Kapahaka



THE SCHOOL
PROVIDES PARENTS/
CAREGIVERS
WITH UP TO DATE
INFORMATION ON
THE SCHOOL AND
THE PROGRESS OF
THEIR CHILDREN.
WE ARE ALSO
COMMITTED TO
ENSURING THAT
YOU DO HAVE A SAY
ON TOPICAL ISSUES.

WEBSITE & FACEBOOK

The school website is regularly updated and developed to provide current information about the school. The address is www.tauraroa.school.nz. Information is also available on Facebook: Tauraroa Area School and Tauraroa Area School International.

BOARD OF TRUSTEES

The Board of Trustees governs the school. After consulting with the general school community, the Board sets policies and agrees to procedures that are in accordance with the school's Charter. Copies of the Charter and school policies are available at the school office or may be emailed on request. The Board is elected by parents and caregivers and meets approximately once per month. Board meetings are open to the public and will be advertised in the school newsletter.

TE WHANAU O TAURAROA

The aims of this group are to give support to students, teachers, Principal and Board. This is as a consultative group that meets regularly to explore issues relating to the learning needs of Maori students. A further aim is to support students, parents and others who have a particular interest in Maori Studies and the teaching of Te Reo and Nga Tikanga.

NEWSLETTER

A newsletter is issued fortnightly. Community members may place casual notices and advertisements as long as they are given to the office or e-mailed to janet.macmenigall@tauraroa.school.nz by 12 noon on the Friday prior to publication. The newsletter is an official method of communication to parents. Current and archived newsletters are available on the school website www.tauraroa.school.nz.

PROGRESS REPORTS

Reports are issued twice each year. Written reports are issued at the end of term two and at the end of the year. An opportunity for parents to meet and discuss the year ahead with subject teachers is given in term one. Parents are encouraged to contact teachers at any time to discuss their children's progress.

EXAMS

Y11 - 13 students sit internal school exams in September and have external exams in November.

TUCK SHOP

A high quality menu is available from the school's Tuck Shop at morning tea and lunch times, everyday except Wednesday. On Wednesdays, school groups frequently run food stalls for fundraising.

BUS SERVICES

Most students travel to school by bus, with the local area being supported by free of charge services provided by the Ministry of Education. Other fee-paying services provided by the Ministry of Education. Other fee-paying services run from Whangarei City, Otaika Valley and Portland. Families with more than one student travelling on a paid route may be eligible for subsidies from the school.

Please check with the school to see which service is best for you.

For further information about the school visit:

www.tauraroa.school.nz



UNIFORM AND APPEARANCE

The official school suppliers are Bethells (The Strand) and Northland school wear (Kamo). All uniform items have the school logo. Hair should be clean, neat and tidy and avoid extreme styles. Second-hand clothing is available. Please check with the office for a suitable time for viewing/fitting.



YEARS 0-6

A green uniform polo shirt is required for ALL primary students. This may be worn with black shorts, skirt, track pants or trousers. A zipped polar fleece can be purchased from Postie Plus or the Tauraroa polar fleece and jacket from our providers. A black thermal top may be worn underneath the polo shirt.

YEARS 7-13

- No nail polish is to be worn.
- No jewellery is to be worn, with the exception of up to a maximum of four small studs in ear(s). Other forms of body piercing are not permitted.
- Young men are expected to be clean shaven

GIRLS

Years 7 - 11

Black dress skirt of length just above or below the knees (with logo); black shorts or trousers (with logo). A skirt with an elastic insert is available to order. White POLO shirt with school logo & striped collar. Uniform (bottle green and gold) polarfleece or school jersey. White or black socks or black tights. School jacket is optional.

Years 12-13

As for Y7-11 with optional white uniform blouse with school logo.

BOYS

Years 7 - 11

Shorts or black trousers (with logo). White POLO shirt with school logo & striped collar. Uniform (bottle green and gold) polarfleece or school jersey. Plain white or black long or short socks. School jacket is optional.

Years 12-13

As for Y7-11 with optional white uniform shirt with school logo.

Year 13 students and Year 12 prefects can purchase a plain black dress jacket (girls) or blazer (boys) from the uniform suppliers.

Shoes

Footwear is to be either sandals with ankle straps or plain black shoes, worn with white or black socks. High heels (over 5cm) are not permitted. NOTE: For safety reasons, the wearing of enclosed shoes in technology and science classes is required.

Hats

Sunhats are compulsory for all outdoor activity for students in Years 0-6 in Terms 1 and 4 and strongly recommended for all other year levels. Bottle green, wide brim or bucket style hats are available from the school. Plain black peak caps may be worn in Years 7-13. A black 'Beanie' with school logo may be worn outside in cold weather, in Terms 2 and 3.

Scarf

During periods of cold weather, students will be permitted to wear a PLAIN BLACK scarf.

Physical Education

T-shirts and shorts or tracksuit pants are to be worn during Physical Education classes. Sneakers are to be worn when using the 'Astro-Turf' courts. Everyday uniform clothing is not appropriate. T-shirts that leave the shoulders and/or midriff bare, or are 'low-cut' are NOT acceptable. All students MUST tie back long hair. Swimming caps are recommended for students when in the swimming pool. The wearing of rash vests is encouraged. Team Uniforms

Black shorts and the school's sport top are worn by all teams. A small rental is charged to cover laundry costs.

School Mufti Days

Clean and tidy mufti may be worn. Clothing advertising alcohol, illegal substances or any messages or images inappropriate in a school setting will not be permitted. Makeup and jewellery may be worn on mufti days. Any jewellery worn is at the students' own risk. Teachers reserve the right to ask students to remove jewellery deemed inappropriate or dangerous for a particular activity or if health or safety issues arise.



