

19 May 2017

*From the Principal's desk*

Nga mihi nui, kia koutou katoa,

I'm very proud of the the achievements of our students in a wide range of activities. Our Junior Kapahaka performed brilliantly at Forum North last Saturday, our sports teams are competing well at the Northland Area Schools tournament (having won volleyball and football competitions at the time of writing), our clay target shooters continue to dominate in their competitions and our Shakespeare performers are about to head to Wellington for the NZ secondary school finals. We can be proud of the reputation our school has for academic achievement and, more importantly, developing well-rounded students of good character.

I am enjoying the challenges of leading the NZ Area Schools Association. As the president of our organisation I am making frequent trips to Wellington to meet with senior Ministry of Education and other officials to lobby for the needs of our Year 1-13 rural schools. Next week I will be meeting with our new Minister of Education, Nikki Kaye, in my position on the advisory group reviewing the \$11b per annum education spending in NZ. I also attend meetings in Wellington reviewing the government's Investing in Educational Success strategies (including Communities of Learning) and the needs of small and isolated schools (as part of the wider funding review). Once a term, I am joined by the deputy chair of our board of trustees, Ringi Smith, as we meet with the NZ Area Schools executive. I am very grateful to my senior management team and other staff for their efforts in keeping our school running effectively in my absences.

This week I have met with the principals of neighbouring schools with whom we are forming a Community of Learning (CoL) / Kahui Ako. I look forward to developing a wider, shared vision for the children of our district. This is quite a shift from the competitive model established with 'Tomorrow's Schools' in 1989. As always, 'the devil is in the detail' but I believe there is scope to work together for the benefit of all of our learners in this model.

Reports for students in Years 11-13 are being issued today. We ask that parents take the time to look at these with their children. Academic Counselling is being offered to those students who are at risk of not achieving their goals this year. This involves parents and students meeting with their deans to formulate an action plan to address any challenges. We encourage all parents of senior students to attend student led conferences on 31 May. An online booking system will be available next week. This is an important opportunity for parents to discuss progress and goals with students and their teachers.

Heoi ano,

Grant Burns  
Principal

*Coming Events:*

19 May Y11-13 Reports issued  
22 May School photos;  
26 May **Disco** (PA) Juniors 5:00-7:00; 9-13 7:30 to 10:00pm;  
31 May Y11-13 Student Led Conferences 3:30-7:00pm  
31May-5Jun Shakespeare National Festival in Wellington  
1 June TAS Cross Country  
**2-6 June Mid Term Break (Friday - Monday)**  
8 June 40 Hour Famine sleepover  
21 June Wig Wednesday  
23 June Y0-10 reports issued  
27 June J-Rock (junior stage challenge)  
28 June Vision and Hearing screens NE and Y7  
30 June Mathex @ WBHS 2:00-6:00pm (Y5-10)  
1 July School Ball  
4 July TAS Matariki celebration/Wearable Arts show  
7 July *End of T2*  
24 July *Start T3*  
30 Aug-5 Sept Y11-13 Exams  
20 September TAS Creative @ Forum North  
29 September *End T3*  
16 Oct *Start T4*  
9 Nov NCEA Starts (L1 Drama)  
1 Dec 9-10 Reports  
4-8 Dec CV Week  
7 Dec 0-8 Reports issued  
12 Dec 9-13 prizegiving; Leavers dinner  
13 Dec Y0-8 Prize giving; End T4

**Cornerstone Value:** Whai Tika: Duty - To do what is right. What a person ought to do.

The award winning longitudinal 'Dunedin study' of 1000 people born in the 1970s has found the greatest single determinant in a person's success in life is self control. Furthermore, the happiest people in the study are those who contribute positively to the lives of others. I believe a sense of duty has a significant role in these aspects of life. It means putting aside temporary feelings and doing the *right thing* - even when it might involve personal cost or temporary sacrifice. It means responding to the needs of others in a considerate and generous way. It means fulfilling one's responsibilities as a member of a community in a way that is not always self-serving.

# TE KURA TAKIWA O TAURAROA TAURAROA AREA SCHOOL

Vision: To be the best we can be.

www.tauraroa.school.nz

Telephone 4322643

05 May 2017

Issue 6

## www.lizdaviesphotography.co.nz

A photographer will be visiting our school to take the school/team photos on **Monday 22 May 2017**

You will have received a photo order form. Please complete and return the form before 19 May. If you prefer, visit the above website to place an order online.

Individual/Family photos will be taken at 8:15am so please be prompt.

## Word Of the Week Winners

### Peccadillo

**Junior:** I used all the hot water in the shower knowing it was a *peccadillo*.  
**Theo Redfern, room 4.**

**Intermediate:** Bothering Jennifer was a minor *peccadillo* to me but to her it was a fully fledged crime.

**Adah Winslow, 7PA**

### Oblivious

**Intermediate:** My mum was *oblivious* to the fact that I used her perfume.

**Anahera-Maia, 7PA**

**Senior:** People that have their noses buried in their phones are often *oblivious* to the things that are happening around them.

**Ethan Walton-Jones, year 10.**

With each turn of the page she dived deeper and deeper into a brand new adventure, becoming *oblivious* to the one she really lives in.

**Katelyn Mills, year 12.**

### Benevolent

**Junior:** I am *benevolent* when I share my lollies.

**Skylah Bettin, year 4**

**Intermediate:** My friends are very *benevolent* because they laugh at my jokes even when they're not funny.

**Emily Dainty, 7PA.**

My friend Will is the most cheerful and *benevolent* person I know and he also loves cheese.

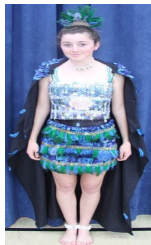
**Karlos Harrison, 8AW**

My dad is very *benevolent* because he tries his best to look after me all the time.

**Jorja Simpson, 8AW**

## Tauraroa Wearable art competition Tuesday 4 July Water Theme

Entry forms available from Mrs Guest or at the office. Sections include full wearable art masks and headgear.



**PoolFx**

## School Expenses

Our school does not ask for donations. We do ask that you cover the cost of any school workbooks that are provided and activities that you have agreed to your child taking part in.

School payments may be made to Tauraroa Area School Board of Trustees Bank account number 12-3115-0012400-000. Please use the students name as a reference. Setting up an automatic payment will pay school items and eventually keep your account current for future activities. Thank you to the families who do keep their accounts current.

The competitive Shakespeare fundraising raffle, win a 5 Hour Working Bee - was won by Pauline Thomas, congratulations.

3/4 bedroom Rental house wanted in the TAS school zone or near. One outside dog. Please ring Renee 0210750208

**Uniform:** Students are required to be in the correct uniform at Tauraroa Area School.

Footwear must be black shoes. If you come to school with non compliant shoes, you will be issued a pair for the day from the front office. With winter on the way a long sleeved white thermal may be worn under the polo shirt.

**For Sale:** TAS woollen jumper size 16 \$45 Tel: 020 40873839

**TAS Bus:** You will require a ticket to travel on the TAS bus, including the trip to Maungakaramea for sports. \$10 for a ticket for 10 trips. Available at the office.

## TAS Ball tickets on sale now!

Buy your ticket from E1 morning tea or lunch time Get in quick, early bird special over next week



## Student Led Conferences: Y11-13 students

On-line bookings will be open from **Monday 22 May**. To book interviews please go to [www.schoolinterviews.co.nz](http://www.schoolinterviews.co.nz) and enter code **yakc5**. You will need to know the subjects AND the teachers names you wish to meet with. **Interviews 31 May 3:30-7pm**

## TAS Bus

You will require a ticket to travel on the TAS bus, including the trip to Maungakaramea for sports. \$10 for a ticket for 10 trips. Available at the office.



## Music News.

NCEA Music students are required to attend a solo performance evening on **Monday the 3rd of July at 7pm**. This is a requirement for their course.

Due to the large number of students wanting to take drum lessons we have decided that some students will have one term on and one term off. A list of names of students who will not receive their lessons again until Term Three will be in the school notices.

The school concert band and jazz band will be performing at our school Matariki Festival on the **4th of July**.

[derek.hopper@tauraroa.school.nz](mailto:derek.hopper@tauraroa.school.nz).

## Netball Leadership Programme

Congratulations to Emma Weir and Paige Harrison on being selected for the Whangarei Netball Centre Leadership Programme. Each year two students from schools in Whangarei are selected to participate in this programme and receive specialist support in umpiring and coaching. Highlights include working with The Mystics at the 'Future Ferns Day' to train younger students, and attending a Mystics game. This is a huge feather in both of these girls caps and we wish them luck in their leadership journey.

Supporting our local community by sponsoring the Duke of Edinburgh programme run through Tauraroa Area School

## FUNDRAISING FOR OUR EUROPE TRIP



PRIMARY: 5PM-7PM  
SENIOR: 7:30-10PM  
YEARS 7&8 CAN  
COME TO EITHER.

~Hot Dogs  
~Lolly Bags  
~Hot Chips  
~Fizzy Drinks

MUSIC, DANCE, SPOT PRIZES,  
DRESS UP AND MORE!

Fairy and Pirate themed, Prizes for best dressed....

## Cyberattack warning

Recently over 150 countries fell victim to a cyberattack called WannaCry. WannaCry is a type of Malware called Ransomware that hijacks and corrupts your files, making them unusable, until you pay the ransom. This attack usually happens from the pirates pretending to be a site or person you trust, sending you emails with attachments giving them access to your systems. Once on your system the virus then can jump to other systems. To ensure your technology is safe please update antivirus software and install Windows updates. Also make sure you know and trust emails, attachments and links sent to you. If in doubt do not click links or attachments in an email. Never reply to spam (unsolicited) email - it only verifies that your email address is active, which in turn encourages more spam email! Everybody's responsibility -students, staff and families to keep our community safe.

## JROCK NEWS

**Participant (performer and stage crew) fees** will be due to the school

by **Wednesday 31st May** at the latest. The fees for performers and stage crew are \$20 per participant. The fees should be paid to the school office or via the school's online banking. If you online direct credit to the school, please indicate the payment is for JRock. Please also return the permission forms to the office asap.

Many thanks to you all for your ongoing support. Thanks to those who have been able to fundraise a bit extra to help us out. Every little bit goes a long way. Don't forget the Facebook Page too. Search Facebook - Tauraroa Area School JRock Fundraising Page TASJROCK2017



## Past Student success

Congratulations to **Poppy Taylor-Moore** on completing a Bachelor of Arts (photo Poppy and River)



and

**Hayley Zimmerman**  
- Master of Management studies with first class honours.



## Home-based childcare @ Maungakaramea

Spaces available for pre-schoolers.

Monday-Thursday  
20 hour ECE Subsidy available  
For more info call/text Wendy 021 0624 388



## Computer courses for farmers

**Keen to learn how to use your farm data to help your business?**

Build confidence in using farm data with an introduction to Excel (spreadsheets)  
(23 May 630-830pm) Tauraroa School Library  
Course cost \$80  
Spaces are limited so get in quick!



Supported by:

Phone Deb on 0800 273 3377  
[www.rmpp.co.nz/page/computer](http://www.rmpp.co.nz/page/computer)

We would also like to thank the following businesses for their generous donations:

- \* Thai Authentic massage
- \* Tyre Power
- \* Hush
- \* Red Seal
- \* Pak n Save
- \* Hampton Downs
- \* Red Dining
- \* Harraways
- \* Mood
- \* Foxy Locks
- \* Onerahi b4 school care
- \* Liquorland
- \* More FM

